



PERSONS NOT IN THE LABOUR FORCE, AUSTRALIA, SEPTEMBER 1986 PRELIMINARY

PHONE INQUIRIES • *about these statistics*—contact Ms Etel Hammond-Roldan on Canberra (062) 52 6503 or any ABS State office.

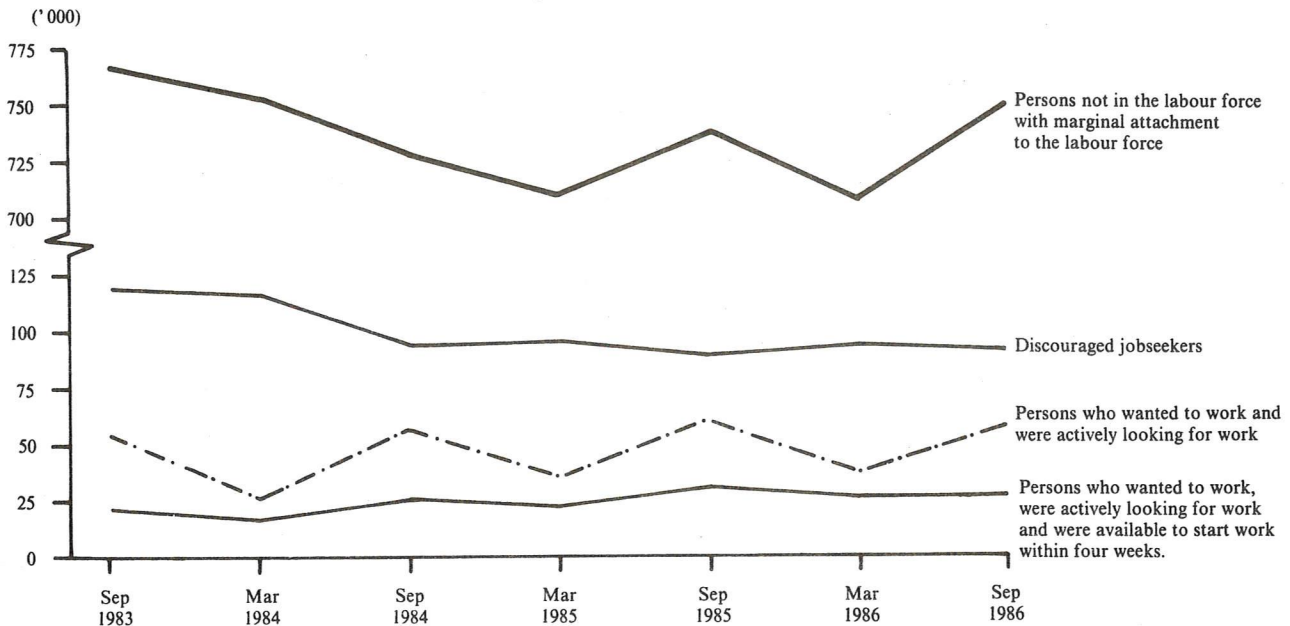
• *about other statistics and ABS services*—contact Information Services on Canberra (062) 52 6627, 52 5402, 52 6007 or any ABS State office.

MAIL INQUIRIES • *write to* Information Services, ABS, P.O. Box 10, Belconnen, A.C.T. 2616 or any ABS State office.

ELECTRONIC SERVICES • on VIATEL — key *656#. • on AUSSTATS — phone (062) 52 6017.
• on TELESTATS — phone (062) 52 5404.

MAIN FEATURES

DIAGRAM 1. PERSONS NOT IN THE LABOUR FORCE WITH MARGINAL ATTACHMENT TO THE LABOUR FORCE,
SEPTEMBER 1983 TO SEPTEMBER 1986
(Source of data: Table 1)



In September 1986 there were an estimated 4,610,300 persons aged 15 and over who were not in the labour force. These people constituted 37.6 per cent of the civilian population in the same age group, a proportion that had remained fairly steady at around 39.0 per cent from September 1983 to September 1985 but has decreased slightly in the two surveys since.

16.3 per cent (749,400) of persons not in the labour force were considered to be marginally attached to the labour force in September 1986. The majority of them (584,000) were females. Only 288,400 (38.5 per cent) of those marginally attached to the labour force intended to look for work in the next twelve months whilst 30.7 per cent did not intend to look. 72.0 per cent of persons with marginal attachment preferred to work part-time.

The number of persons who were discouraged jobseekers in September 1986 (90,500 or 12.1 per cent of those who were marginally attached) has decreased since September 1983 (118,200). The most commonly reported reasons for not actively looking for work by discouraged jobseekers were 'no jobs in locality or line of work' (36.8 per cent) and 'considered too young or too old by employers' (34.6 per cent). The number who reported the reason 'no jobs at all' has decreased considerably from 39,700 in September 1983 to only 11,700 in September 1986.

Of those persons not in the labour force who wanted to work and were actively looking for work, 47.2 per cent were aged 15 to 19 and 36.9 per cent had had a job within the last twelve months. Approximately half of these people were not available to start work within four weeks.

The most common reason for leaving their last job reported by persons who wanted to work, but were not actively looking for work and were available to start work within four weeks, was pregnancy.

Note: Survey estimates are subject to sampling variability, as explained in paragraph 23 following.

EXPLANATORY NOTES

Introduction

The monthly Population Survey (which is described in *The Labour Force, Australia* (6203.0)) comprises the monthly labour force survey and supplementary topics. This publication contains some results of a supplementary survey run in association with the September 1986 labour force survey conducted throughout Australia.

2. Of the respondents to the labour force survey, those who fell within the scope of the supplementary survey were asked additional questions. This subset of respondents was asked about their labour force aspirations and, if appropriate, their reasons for not actively looking for work and their availability for work.

Scope

3. The scope of this supplementary survey was the same as that used for the labour force survey (described in full in *The Labour Force, Australia* (6203.0)) except that it was restricted to persons not in the labour force.

Definitions

4. Persons not in the labour force are by definition those persons who do not meet the criteria that would enable them to be classified as being in the labour force. To be classified as being in the labour force, a person must be aged 15 or over and be either *employed* or *unemployed*.

5. *Persons not in the labour force*, therefore, include all persons aged 15 and over who are not employed, who want to work but do not meet the criteria to be classified as unemployed; who do not want to work; or who, through incapacity or infirmity cannot work.

6. The criteria determining those in the labour force are based on actual activity (i.e. working or looking for work) during the survey week. The criteria associated with marginal attachment to the labour force, in particular the concepts of wanting to work, reasons for not actively looking for work and availability to start work, are more subjective and are not based on respondents' actual activity. Hence, the measurement of these criteria is affected by the respondents' own interpretation of the concepts used. An individual respondent's interpretation is affected by such factors as the respondent's work aspirations, as well as family, economic and other commitments.

7. *Persons with marginal attachment to the labour force* are those who were not in the labour force in the survey week, wanted to work and:

- (a) were actively looking for work but do not meet the criteria to be classified as unemployed; or
- (b) were not actively looking for work but were available to start work within four weeks.

8. *Persons not in the labour force who wanted to work* are those who:

- (a) in the four weeks up to the end of the survey week had taken *active steps* to find work but do not meet the criteria to be classified as unemployed; or

- (b) although claiming to have looked for work in the four weeks up to the end of the survey week, had not taken *active steps* to find work; or

- (c) in the four weeks up to the end of the survey week had not looked for work but in the survey answered 'yes' or 'maybe' to the question '*Even though you have not been looking for work would you like a full-time or part-time job?*'.

9. *Discouraged jobseekers* are those persons with marginal attachment to the labour force who wanted to work and were available to start work within four weeks but whose main reason for not taking active steps to find work was that they believed they would not be able to find a job for any of the following reasons: considered to be too young or too old by employers; difficulties with language or ethnic background; lacked the necessary schooling, training, skills or experience; no jobs in their locality or line of work; or no jobs at all.

10. *Active steps taken to find work* comprise writing, telephoning or applying in person to an employer for work; answering a newspaper advertisement; checking factory or Commonwealth Employment Service noticeboards; being registered with the Commonwealth Employment Service; checking or registering with any other employment agency; advertising or tendering for work; and contacting friends or relatives.

11. A *job* is any paid employment, full-time or part-time, lasting two weeks or more.

12. Unless otherwise stated, all characteristics referenced in this publication are as at the survey week.

13. Further definitions of labour force and demographic classifications appearing in this publication are given in *The Labour Force, Australia* (6203.0).

14. The various groups of persons either in the labour force or not in the labour force, including those marginally attached to the labour force, are shown schematically in the diagram on the following page.

Results of the survey

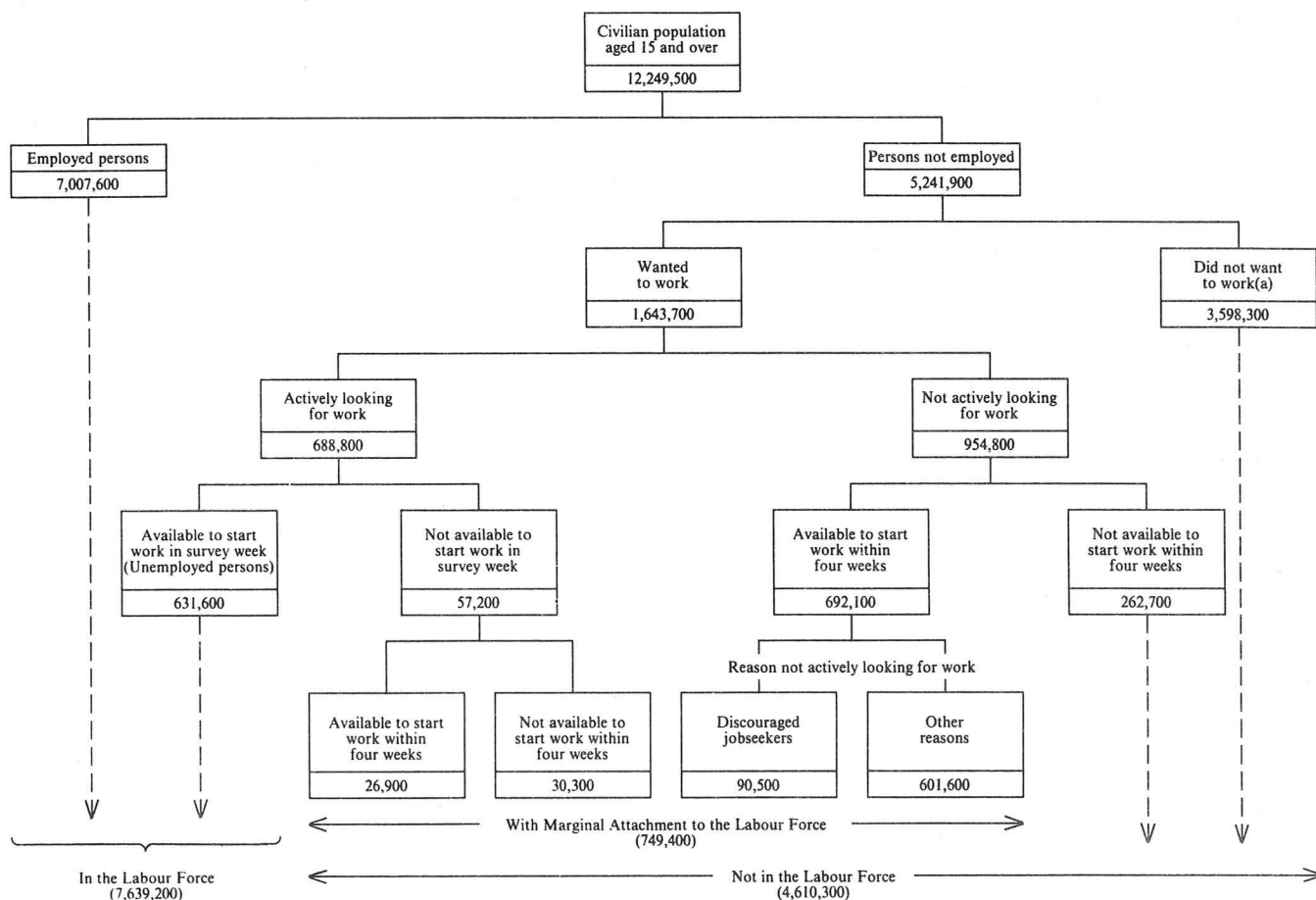
15. Estimates of persons not in the labour force are also published in *The Labour Force, Australia* (6203.0). However, more detailed information is contained in this publication.

16. Due to differences in the method of estimation used in this supplementary survey and that used in the Labour Force Survey, there are some small variations between estimates in this publication and those in the September issue of *The Labour Force, Australia* (6203.0).

17. The estimates in this publication refer to information collected in the survey month and, due to seasonal factors, may not be representative of other months of the year.

18. This publication contains only a summary of the results of the survey. Estimates shown are preliminary and may be revised. A more detailed publication will be released as soon as possible, and further information is available on request.

RELATIONSHIP OF PERSONS WITH MARGINAL ATTACHMENT TO THE LABOUR FORCE TO PERSONS IN OR NOT IN THE LABOUR FORCE, SEPTEMBER 1986



(a) Includes institutionalised, boarding school pupils and persons permanently unable to work.

19. Results of similar surveys, which have been conducted each March and September since March 1979, and also in May 1977 and November 1975, have been published in catalogue 6220.0.

20. It is proposed that this survey will next be conducted in March 1987.

Discontinuities in the series

21. New or amended concepts were introduced in the September 1983 survey, causing a break in series. These modifications included the addition of certain groups of persons excluded from previous *Persons Not in the Labour Force* surveys, several alterations to the order and wording of questions and several alterations to definitions used in the survey.

22. Estimates for September 1986 contained in this publication are based on a revised labour force questionnaire introduced in April 1986. The definition of employment was expanded resulting in a slight decrease in the estimate of persons not in the labour force. Further information is contained in *The Labour Force, Australia* (6203.0) and in an information paper *Questionnaires Used in the Labour Force Survey* (6232.0). Although estimates for previous years have not been revised in this publication, the September issue of *The Labour Force, Australia* (6203.0) contains revised estimates for persons not in the labour force back to August 1985.

Reliability of the estimates

23. Estimates in this publication are subject to two sources of error:

- (a) *sampling error*: since the estimates are based on information obtained from occupants of a sample of dwellings, they may differ from the figures that would have been produced if all dwellings had been included in the survey. One measure of the likely difference is given by the *standard error*. More information about this topic is contained in *The Labour Force, Australia* (6203.0). A table of estimated standard errors for this survey follows these notes. Estimates with a standard error of more than about 25 per cent have not been shown in this publication, as the degree of sampling variability would seriously detract from their value for most reasonable uses. Although figures for these small components can, in some cases, be derived by subtraction they should not be regarded as reliable.
- (b) *non-sampling error*: inaccuracies may occur because of imperfections in reporting by interviewers and respondents and errors made in the coding and processing of data. These inaccuracies

may occur in any enumeration, whether it be a full count or only a sample. Every effort is made to reduce the non-sampling error to a minimum by careful design of questionnaires, intensive training and supervision of interviewers and efficient operating procedures.

Related publications

24. Other ABS publications which may be of interest include:

The Labour Force, Australia (6203.0) — issued monthly (\$1.20, \$2.10 incl. postage)

Labour Force Experience, Australia, during the year ending February 1986 (6206.0) — issued annually

Underemployed Workers, Australia, May 1985 (6265.0) — issued irregularly

Job Search Experience of Unemployed Persons, Australia, June 1986 (6222.0) — issued annually

Employment, Underemployment and Unemployment 1966-1983, Australia (6246.0) — issued irregularly (\$1.70, \$2.40 incl. postage)

25. Current publications produced by the ABS are listed in the *Catalogue of Publications, Australia* (1101.0). The ABS also issues, on Tuesdays and Fridays, a *Publications Advice* (1105.0) which lists publications to be released in the next few days. The Catalogue and Publications Advice are available from any ABS office.

Symbols and other usages

- * subject to sampling variability too high for most practical uses. See paragraph 23 above.
- .. not applicable.

26. Because figures have been rounded, discrepancies may occur between sums of the component items and totals.

Electronic services

27. VIATEL. Key *656# for selected current economic, social and demographic statistics.

AUSSTATS. Thousands of up-to-date time series are available on this ABS on-line service through CSIRONET.

For further information phone the AUSSTATS Help Desk on (062) 52 6017.

TELESTATS. This service provides foreign trade statistics tailored to users' requirements.

Further information is available on (062) 52 5404.

IAN CASTLES
Australian Statistician

STANDARD ERRORS OF ESTIMATES

Size of estimate	Number	Relative standard error (per cent)	Size of estimate	Number	Relative standard error (per cent)
4,000	970	24.3	100,000	4,400	4.4
4,500	1,050	22.9	200,000	5,800	2.9
5,000	1,100	21.8	300,000	6,800	2.3
6,000	1,200	19.9	500,000	8,300	1.7
10,000	1,550	15.4	1,000,000	10,700	1.1
20,000	2,150	10.7	2,000,000	13,600	0.7
50,000	3,250	6.5	5,000,000	18,300	0.4

TABLE 1. CIVILIAN POPULATION AGED 15 AND OVER : LABOUR FORCE STATUS,
SEPTEMBER 1983 TO SEPTEMBER 1986
(' 000)

	Sept. 1983	March 1984	Sept. 1984	March 1985	Sept. 1985	March 1986	Sept. 1986
Civilian population aged 15 and over	11,585.5	11,718.5	11,808.0	11,897.3	11,998.5	12,121.7	12,249.5
Employed	6,350.0	6,504.2	6,572.9	6,634.5	6,783.9	6,926.3	7,007.6
Unemployed	718.7	701.0	621.3	671.7	587.7	640.4	631.6
Persons not in the labour force	4,516.8	4,513.2	4,613.8	4,591.1	4,626.9	4,555.1	4,610.3
With marginal attachment to the labour force	765.6	750.0	726.3	708.3	739.7	707.3	749.4
Wanted to work and were actively looking for work	53.8	25.7	56.4	32.1	60.4	35.2	57.2
Were available to start work within four weeks	21.9	18.7	26.2	22.2	30.2	25.0	26.9
Were not available to start work within four weeks	31.9	7.0	30.2	9.9	30.2	10.2	30.3
Wanted to work but were not actively looking for work and were available to start work within four weeks	711.8	724.3	669.9	676.3	679.4	672.1	692.1
Discouraged jobseekers	118.2	116.1	93.7	96.0	89.0	96.8	90.5
Other	593.6	608.2	576.2	580.3	590.4	575.3	601.6
Without marginal attachment to the labour force	3,751.2	3,763.3	3,887.6	3,882.8	3,887.1	3,847.8	3,860.9
Wanted to work but were not actively looking for work and were not available to start work within four weeks	244.2	224.0	264.1	222.7	265.2	261.4	262.7
Did not want to work	3,225.4	3,275.2	3,365.6	3,399.1	3,380.1	3,340.8	3,345.3
Permanently unable to work	77.3	52.3	56.5	54.4	47.8	51.1	57.2
Institutionalised(a) and boarding school pupils	204.3	211.8	201.4	206.6	194.1	194.4	195.8

(a) Includes some patients in hospitals and sanatoria and inmates of reformatories, jails etc.

TABLE 2. PERSONS NOT IN THE LABOUR FORCE WITH MARGINAL ATTACHMENT TO THE LABOUR FORCE:
MAIN REASON FOR NOT ACTIVELY LOOKING FOR WORK, SEPTEMBER 1983 TO SEPTEMBER 1986
(' 000)

	Sept. 1983	March 1984	Sept. 1984	March 1985	Sept. 1985	March 1986	Sept. 1986
Wanted to work and were actively looking for work	53.8	25.7	56.4	32.1	60.4	35.2	57.2
Were available to start work within four weeks	21.9	18.7	26.2	22.2	30.2	25.0	26.9
Were not available to start work within four weeks	31.9	7.0	30.2	9.9	30.2	10.2	30.3
Wanted to work but were not actively looking for work and were available to start work within four weeks	711.8	724.3	669.9	676.3	679.4	672.1	692.1
<i>Main reason for not actively looking for work</i>							
Had a job to go to	11.4	10.3	8.8	9.1	11.2	11.7	9.9
Personal reasons	243.8	265.5	241.8	263.5	256.2	251.0	249.9
Own ill health, physical disability, pregnancy	61.9	62.2	60.6	65.8	69.1	63.0	56.5
Attending an educational institution	82.9	104.8	93.4	104.9	102.3	111.1	106.9
Had no need to work	50.5	49.5	41.5	44.7	41.3	38.2	40.0
Give others a chance	11.2	11.0	9.3	9.1	6.2	4.5	7.4
Welfare payments/pension may be affected	22.1	21.7	17.4	24.2	19.6	19.6	21.3
Moved house/holidays	15.2	16.3	19.6	14.7	17.8	14.7	17.8
Family reasons	277.2	262.5	263.1	238.2	248.4	241.4	267.3
Ill health of other than self	13.4	10.1	15.2	11.0	14.8	12.9	11.6
Unable to find suitable childcare	222.4	212.1	76.3	73.6	72.5	70.1	72.6
Children too young/preferred to look after children			132.9	115.0	126.1	117.5	140.2
Other family considerations	41.4	40.3	38.7	38.6	34.9	40.9	43.0
Discouraged jobseekers	118.2	116.1	93.7	96.0	89.0	96.8	90.5
Considered too young or too old by employers	29.0	34.5	26.9	31.0	32.2	37.6	31.3
Difficulties with language or ethnic background	*	*	5.7	4.7	5.0	5.2	4.0
Lacked necessary schooling, training, skills or experience	8.4	10.0	8.9	11.2	8.9	11.5	10.2
No jobs in locality or line of work	38.2	40.7	29.0	33.0	26.0	29.1	33.3
No jobs at all	39.7	27.1	23.2	16.1	16.8	13.4	11.7
No jobs in suitable hours	15.1	22.9	19.3	17.7	18.4	17.5	16.5
Other reasons	27.2	28.2	29.5	29.7	36.4	34.6	40.9
Did not know	8.1	9.5	4.2	10.3	8.0	9.0	6.6
Not asked(a)	10.9	9.3	9.5	11.9	12.0	10.1	10.7
Total	765.6	750.0	726.3	708.3	739.7	707.3	749.4

(a) Persons who had a job but, up to the end of the survey week, had been away from work without pay for four weeks or longer and had not been actively looking for work.

TABLE 3. PERSONS NOT IN THE LABOUR FORCE WITH MARGINAL ATTACHMENT TO THE LABOUR FORCE : SUMMARY OF CHARACTERISTICS, SEPTEMBER 1986
(' 000)

	<i>Persons who wanted to work and were actively looking for work</i>			<i>Persons who wanted to work but were not actively looking for work and were available to start work within four weeks</i>			<i>Persons with marginal attachment to the labour force</i>		
	<i>Were available to start work within four weeks</i>	<i>Were not available to start work within four weeks</i>	<i>Total</i>	<i>Discouraged jobseekers</i>	<i>Other</i>	<i>Total</i>	<i>Males</i>	<i>Females</i>	<i>Persons</i>
<i>Age group—</i>									
15-19	7.1	20.0	27.0	7.1	115.9	123.1	72.7	77.3	150.1
20-24	*	5.3	8.5	*	60.8	63.7	11.6	60.6	72.2
25-34	7.6	*	10.4	12.8	173.0	185.7	13.5	182.7	196.2
35-44	4.7	*	6.0	18.6	127.3	145.9	13.3	138.6	151.9
45-54	*	*	*	13.9	65.8	79.7	11.9	70.7	82.6
55-59	*	*	*	8.7	22.7	31.4	8.8	24.3	33.2
60-64	*	*	*	10.9	17.3	28.2	14.0	14.6	28.6
65 and over	*	*	*	15.6	18.8	34.4	19.5	15.1	34.6
<i>Family status—</i>									
Member of a family	21.9	26.6	48.5	73.5	531.2	604.7	130.7	522.5	653.2
Husband or wife	11.8	4.0	15.8	51.8	343.1	394.8	47.3	363.4	410.7
With dependent children present	10.2	*	12.2	26.0	269.3	295.3	16.8	290.7	307.6
Without dependent children present	*	*	*	25.7	73.8	99.5	30.4	72.7	103.1
Not-married family head	*	*	4.0	12.1	70.7	82.9	*	83.3	86.9
With dependent children present	*	*	*	8.1	65.6	73.7	*	74.4	77.3
Without dependent children present	*	*	*	4.1	5.1	9.2	*	8.8	9.6
Full-time student aged 15-24 (a)	4.2	20.7	24.9	4.5	98.1	102.6	64.5	63.0	127.5
Other child (b) of family head	*	*	*	*	15.1	18.4	12.3	9.7	22.0
Other relative of family head	*	*	*	*	4.1	6.0	*	*	6.1
Not a member of a family	*	*	*	12.5	33.2	45.7	20.6	28.8	49.4
Living alone	*	*	*	10.7	22.4	33.2	13.8	20.5	34.2
Not living alone	*	*	*	*	10.8	12.5	6.9	8.3	15.2
Not family coded	*	*	5.0	4.4	37.3	41.7	14.1	32.6	46.7
<i>Type of work preferred—</i>									
Full-time	13.0	21.0	34.0	19.4	123.2	142.5	78.3	98.3	176.6
Part-time	12.1	8.5	20.6	64.0	455.1	519.1	78.3	461.4	539.7
No preference	*	*	*	7.1	23.4	30.5	8.8	24.3	33.1
<i>Whether looked for work in the last 12 months (c)—</i>									
Had looked for work	26.9	30.3	57.2	27.1	115.2	142.3	62.9	136.7	199.5
Less than 5 weeks ago	26.9	30.3	57.2	9.6	29.6	39.1	36.5	59.9	96.4
5 and less than 8 weeks ago	6.9	32.3	39.2	9.9	29.4	39.2
8 and less than 13 weeks ago	4.2	21.2	25.4	6.4	19.0	25.4
13 to 52 weeks ago	6.4	32.1	38.5	10.2	28.4	38.5
Had not looked for work	63.4	486.4	549.8	102.5	447.3	549.8
<i>Time since last job—</i>									
Had had a job	21.9	14.1	36.0	81.9	503.3	585.2	110.3	510.9	621.2
Under 12 months	12.0	9.1	21.1	12.9	139.3	152.2	49.9	123.5	173.3
Under 6 months	8.0	*	11.9	6.2	79.9	86.1	29.6	68.4	98.0
6 and under 12 months	4.0	5.2	9.2	6.8	59.4	66.2	20.3	55.1	75.4
1 and under 3 years	4.6	*	8.2	12.1	96.4	108.4	26.4	90.3	116.6
3 and under 5 years	*	*	*	14.3	71.0	85.3	12.8	75.5	88.2
5 and under 10 years	*	*	*	20.9	98.3	119.2	12.4	109.6	122.0
10 and under 20 years	*	*	*	14.4	75.5	90.0	7.3	83.4	90.7
20 years or more	*	*	*	7.3	22.8	30.1	*	28.8	30.3
Had never had a job	5.0	16.2	21.3	8.6	98.3	106.9	55.1	73.0	128.2
<i>Reason for leaving last job—</i>									
Had had a job	21.9	14.1	36.0	81.9	492.6	574.5	107.6	502.9	610.5
Retired/did not want to work any longer	*	*	*	11.0	33.3	44.3	20.4	24.6	45.0
Retrenched	4.6	*	5.1	15.8	53.7	69.5	18.5	56.1	74.6
Job was temporary or seasonal	4.7	*	8.2	10.3	50.5	60.9	13.5	55.5	69.1
Did not leave to return to studies	*	*	4.7	10.2	42.1	52.3	7.3	49.6	56.9
Left to return to studies	*	*	*	*	8.5	8.6	6.2	5.9	12.1
Own ill health or injury	*	*	*	6.8	41.7	48.5	22.0	28.7	50.8
Unsatisfactory work arrangements	*	*	*	4.3	26.9	31.1	7.3	26.9	34.2
Returned to studies	*	5.9	6.2	*	10.8	11.0	8.0	9.3	17.3
To get married	*	*	*	5.9	30.0	36.0	*	36.6	36.6
Pregnancy/to have children	*	*	*	8.1	142.0	150.1	*	153.1	153.3
To look after family, house or someone else	*	*	*	4.8	29.2	34.0	*	33.2	35.0
To have holiday, to move house/spouse transferred	*	*	*	9.2	44.0	53.2	5.2	51.2	56.3
Business closed down for economic reasons	*	*	*	*	7.2	9.6	*	7.0	10.3
Business closed down for other reasons	*	*	*	*	10.0	11.8	*	9.0	12.1
Other	*	*	*	*	13.3	14.5	4.2	11.7	15.9
Had never had a job	5.0	16.2	21.3	8.6	98.3	106.9	55.1	73.0	128.2
Not asked (d)	10.7	10.7	*	8.0	10.7
Total	26.9	30.3	57.2	90.5	601.6	692.1	165.4	584.0	749.4

(a) Excludes persons aged 20-24 attending school. (b) Aged 15 and over. (c) Persons who had left a job in the last twelve months were only asked whether they had looked for work since that job. (d) Persons who had a job but, up to the end of survey week, had been away from work without pay for four weeks or longer and had not been actively looking for work.

TABLE 4. PERSONS NOT IN THE LABOUR FORCE WITH MARGINAL ATTACHMENT TO THE LABOUR FORCE: MAIN REASON FOR NOT ACTIVELY LOOKING FOR WORK, INTENTION TO LOOK FOR WORK IN THE NEXT TWELVE MONTHS AND TYPE OF WORK PREFERRED, SEPTEMBER 1986 ('000)

	Intention to look for work in the next twelve months					Type of work preferred			Total
	Intended to look	Might look	Did not intend to look	Did not know	Not asked(a)	Full-time	Part-time	No preference	
Wanted to work and were actively looking for work	57.2	34.0	20.6	*	57.2
Were available to start work within four weeks	26.9	13.0	12.1	*	26.9
Were not available to start work within four weeks	30.3	21.0	8.5	*	30.3
Wanted to work but were not actively looking for work and were available to start work within four weeks	288.4	126.3	230.2	26.7	20.5	142.5	519.1	30.5	692.1
<i>Main reason for not actively looking for work</i>									
Had a job to go to	9.9	5.0	4.8	*	9.9
Personal reasons	124.0	42.8	75.3	7.9	..	70.5	169.5	9.9	249.9
Own ill health, physical disability, pregnancy	23.3	11.5	19.1	*	..	14.4	37.4	4.7	56.5
Attending an educational institution	69.1	14.7	21.7	*	..	41.1	64.6	*	106.9
Had no need to work	11.0	8.1	18.6	*	..	*	35.9	*	40.0
Give others a chance	*	*	4.1	*	..	*	7.1	*	7.4
Welfare payments/pension may be affected	4.3	4.8	11.1	*	..	4.7	15.4	*	21.3
Moved house/holidays	15.4	*	*	*	..	7.4	9.2	*	17.8
Family reasons	88.8	55.7	110.6	12.1	..	29.5	229.3	8.5	267.3
Ill health of other than self	4.2	*	*	*	..	*	9.6	*	11.6
Unable to find suitable childcare	18.6	9.3	41.0	*	..	8.7	61.6	*	72.6
Children too young/preferred to look after children	50.7	31.1	52.7	5.7	..	14.3	122.6	*	140.2
Other family considerations	15.3	11.5	13.8	*	..	5.2	35.5	*	43.0
Discouraged jobseekers	39.2	15.8	30.4	5.0	..	19.4	64.0	7.1	90.5
Considered too young or too old by employers	6.6	5.0	17.4	*	..	5.1	24.0	*	31.3
Difficulties with language or ethnic background	*	*	*	*	..	*	*	*	4.0
Lacked necessary schooling, training, skills or experience	5.1	*	*	*	..	*	6.7	*	10.2
No jobs in locality or line of work	20.1	4.3	7.8	*	..	8.6	21.7	*	33.3
No jobs at all	5.7	*	*	*	..	*	9.8	*	11.7
No jobs in suitable hours	9.8	*	*	*	..	*	15.5	*	16.5
Other reasons	23.4	6.6	9.7	*	..	12.1	26.7	*	40.9
Did not know	*	*	*	*	..	*	4.8	*	6.6
Not asked(b)	10.7	4.3	4.5	*	10.7
Total	288.4	126.3	230.2	26.7	77.8	176.6	539.7	33.1	749.4

(a) Comprises persons who had a job to go to, persons who took active steps to find work and persons as defined in footnote(b). (b) Persons who had a job but, up to the end of the survey week, had been away from work without pay for four weeks or longer and had not been actively looking for work.

TABLE 5. PERSONS NOT IN THE LABOUR FORCE WHO WANTED TO WORK BUT WERE NOT ACTIVELY LOOKING FOR WORK AND WERE NOT AVAILABLE TO START WORK WITHIN FOUR WEEKS: REASON NOT AVAILABLE TO START WORK WITHIN FOUR WEEKS, INTENTION TO LOOK FOR WORK IN THE NEXT TWELVE MONTHS AND TYPE OF WORK PREFERRED, SEPTEMBER 1986 ('000)

Reason not available to start work within four weeks	Intention to look for work in the next twelve months					Type of work preferred			Total
	Intended to look	Might look	Did not intend to look	Did not know	Not asked(a)	Full-time	Part-time	No preference	
Personal reasons	59.9	29.0	52.9	5.5	5.4	66.0	75.0	11.7	152.7
Own ill health, etc.	19.2	16.5	32.9	*	4.8	31.1	38.2	7.5	76.8
Studying	37.2	10.3	15.9	*	*	33.5	28.3	*	65.4
At school	27.5	9.1	14.5	*	*	27.0	23.6	*	52.8
Other educational institution	9.7	*	*	*	*	6.5	4.7	*	12.5
Moved house/holidays	*	*	4.1	*	*	*	8.5	*	10.5
Family reasons	14.6	19.2	41.6	4.0	8.5	11.0	70.5	6.5	88.0
Ill health of other than self	*	*	*	*	*	*	7.4	*	9.4
Unable to find suitable childcare	*	*	*	*	*	*	7.7	*	9.9
Children too young/preferred to look after children	10.3	13.6	34.3	*	8.1	8.1	55.3	5.2	68.6
Other reasons	6.3	*	9.8	*	*	5.4	15.2	*	22.0
Total	80.9	51.8	104.3	11.2	14.5	82.5	160.7	19.5	262.7
Males	28.7	12.1	21.7	*	*	39.9	21.5	6.9	68.3
Females	52.2	39.6	82.6	8.0	12.0	42.5	139.2	12.6	194.4

(a) Persons who had a job but, up to the end of the survey week, had been away from work without pay for four weeks or longer and had not been actively looking for work.

